



NAMPA, ID



**BROADMORE**  
2019 SERIES BROCHURE

*Built For Life*

# STANDARD FEATURES

## EXTERIOR

LP Smart Panel exterior siding  
4" trim all windows  
Painted shutters FDS & hitch end (multi section)  
Painted shutters hitch end only (single section)  
6" Eave all sides Multi section  
No rear end wall eave on singlewides  
Black roof vents

## INTERIOR/FINISH WALLS

Factory select Livewire carpet  
7/16" - 6# Carpet pad  
Vinyl flooring in wet areas & per plan  
Factory select vinyl flooring  
Textured ceilings (orange peel)  
Factory select vinyl covered wall panels T/O  
Wainscot beadboard in dining room per model  
Accent décor panel in master bedroom  
Wire closet shelves  
White window trim

## KITCHEN

18 cu. ft. Black Whirlpool frost-free refrigerator  
30" Black Whirlpool free standing electric range, w/clock, window & timer  
7" Double cell stainless steel sink  
Plastic dual handle faucet  
Bank of drawers  
Gimp backsplash

## CABINETRY

Coffee Cherry MDF face frame  
Coffee Cherry MDF raised panel cabinet door  
Doors & drawers w/knobs  
30" overhead kitchen cabinets  
No shelf above washer/dryer  
Shelf above refrigerator  
Crown molding kitchen cabinets  
Beadboard accent above kitchen overheads  
Overhead cabinets w/fixed shelves & finished sides  
Unlined base cabinets w/MDF fixed shelves  
Metal side mount drawer guides  
Wood ply drawer sides

## MASTER BATH

60" 3 pc. ABS tub/shower  
Plastic sink w/dual handle plastic faucets  
Exhaust fan  
Framed bathroom mirrors  
36" height lavy cabinet  
Towel bar & tissue holder  
Gimp backsplash

## GUEST BATH

60" 3 pc. ABS tub/shower  
Plastic sink w/dual handle plastic faucets  
Exhaust fan  
Framed bathroom mirrors  
36" height lavy cabinet  
Towel bar & tissue holder  
Gimp backsplash

## DOORS & WINDOWS

36" Steel in-swing front door w/deadbolt  
34" Fiberglass out-swing rear door w/deadbolt  
Vinyl clad thermo-pane windows with Low "E"  
Vinyl mini blinds T/O  
2-Panel white interior doors  
Residential style mortise door hinges (3)  
Stick-on door stops  
Horizontal slide windows

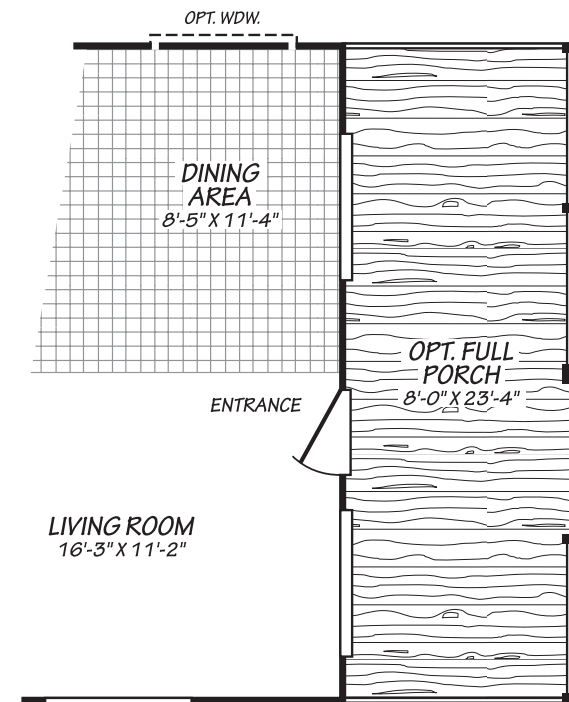
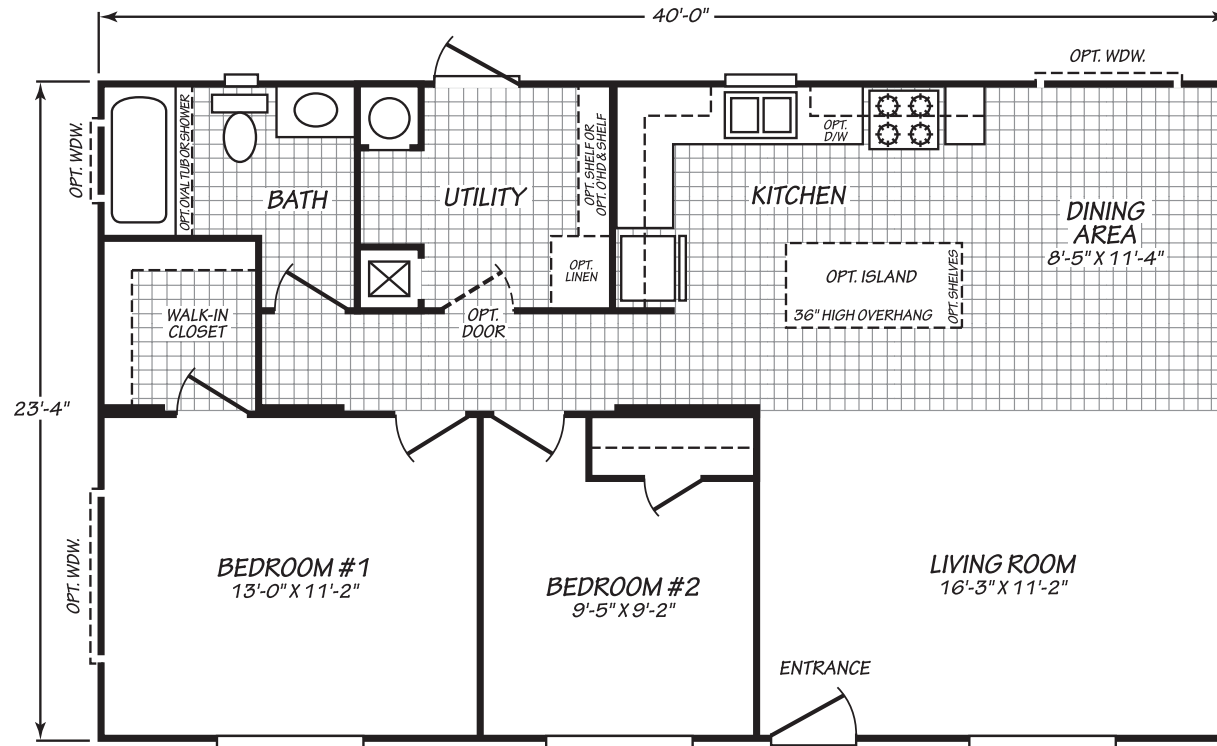
## ELECTRICAL & PLUMBING

200 Amp all electric service (gas optional)  
Master water shut-off valve  
Shut-off valve on toilets  
30 gallon electric water heater  
Electric furnace  
LED can lights T/O  
Wire & brace for ceiling fan in living room  
GFI patio plug near rear door  
Porch lights all exterior doors  
30" power range hood with light

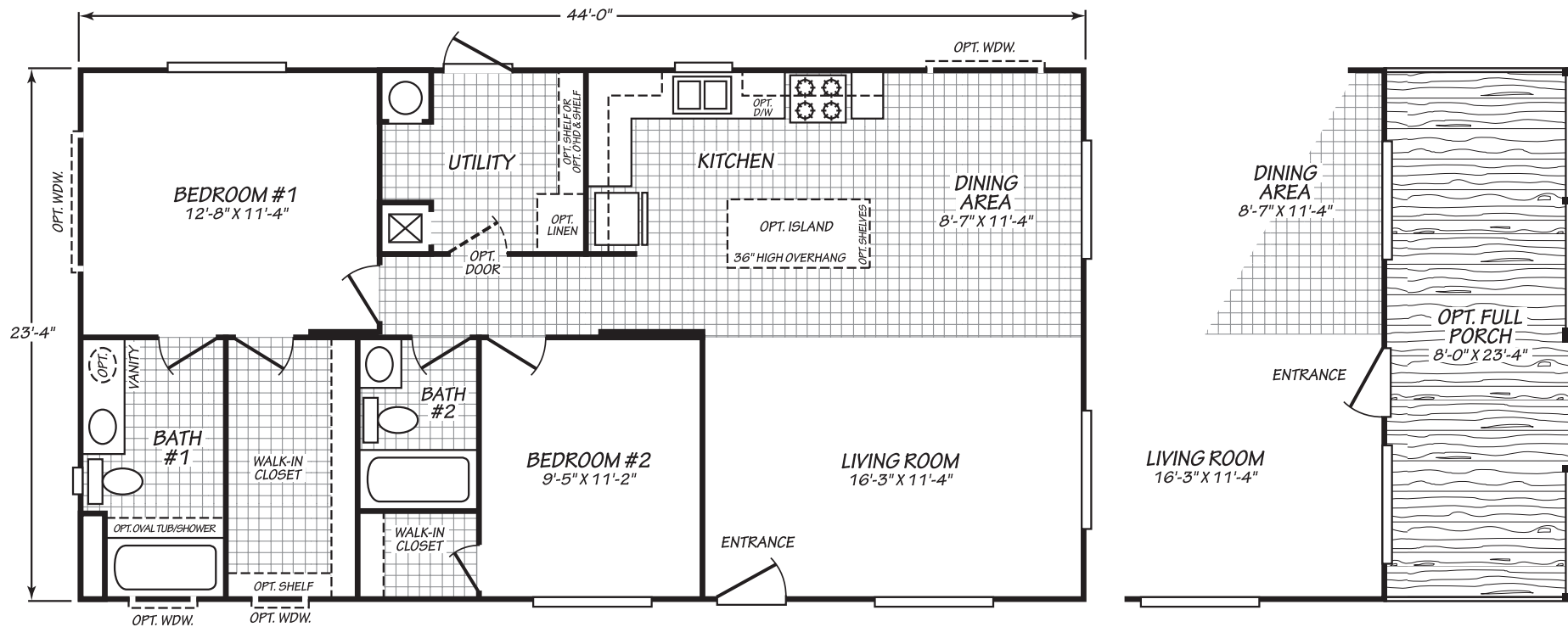
## STRUCTURAL

1 Year "wall to wall" structural warranty (see warranty manual for complete details)  
30 lb. Roof load  
8' flat ceilings  
2" x 4" Exterior walls 16" O.C.  
19/32" T&G OSB floor decking  
3:12 Roof pitch  
Class A fire rated limited lifetime architectural shingles  
Removable hitches  
Zone III Thermal Specifications: R-28 roof, R-11 walls, R-22 floor

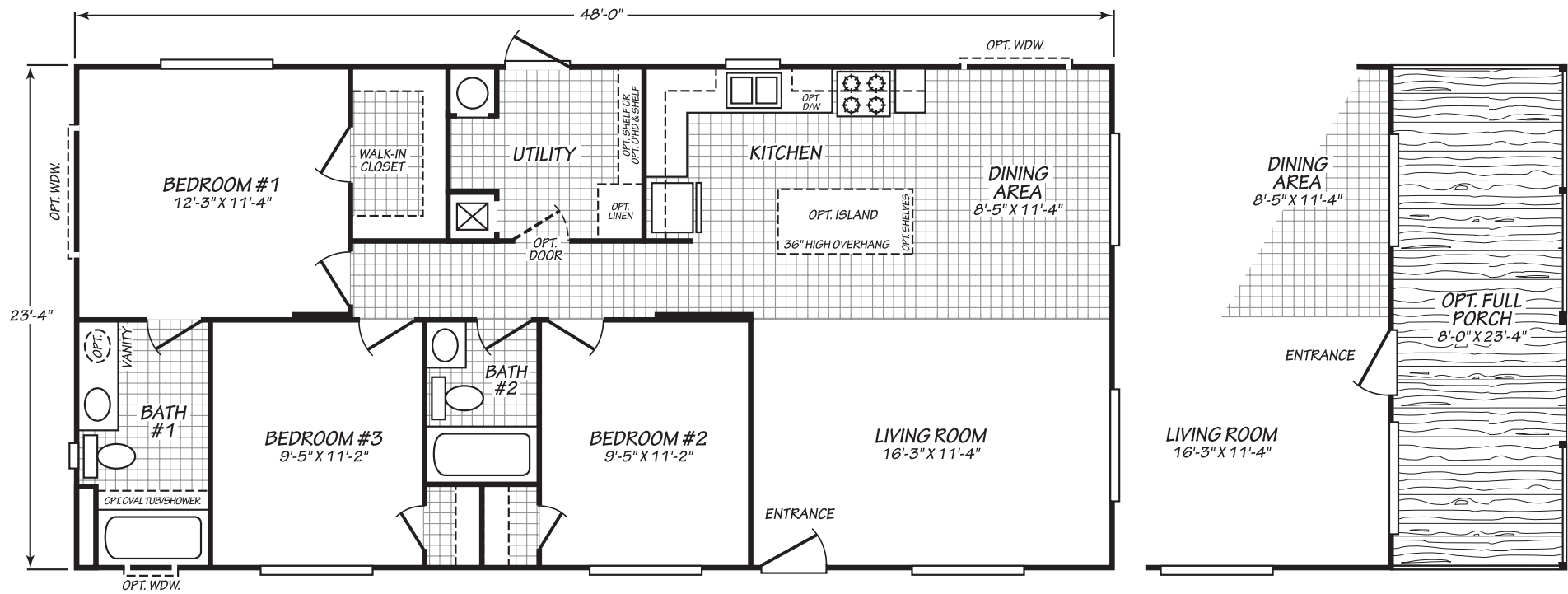
**24402M** 2 BEDS • 1 BATHS • 933 SQ. FT.



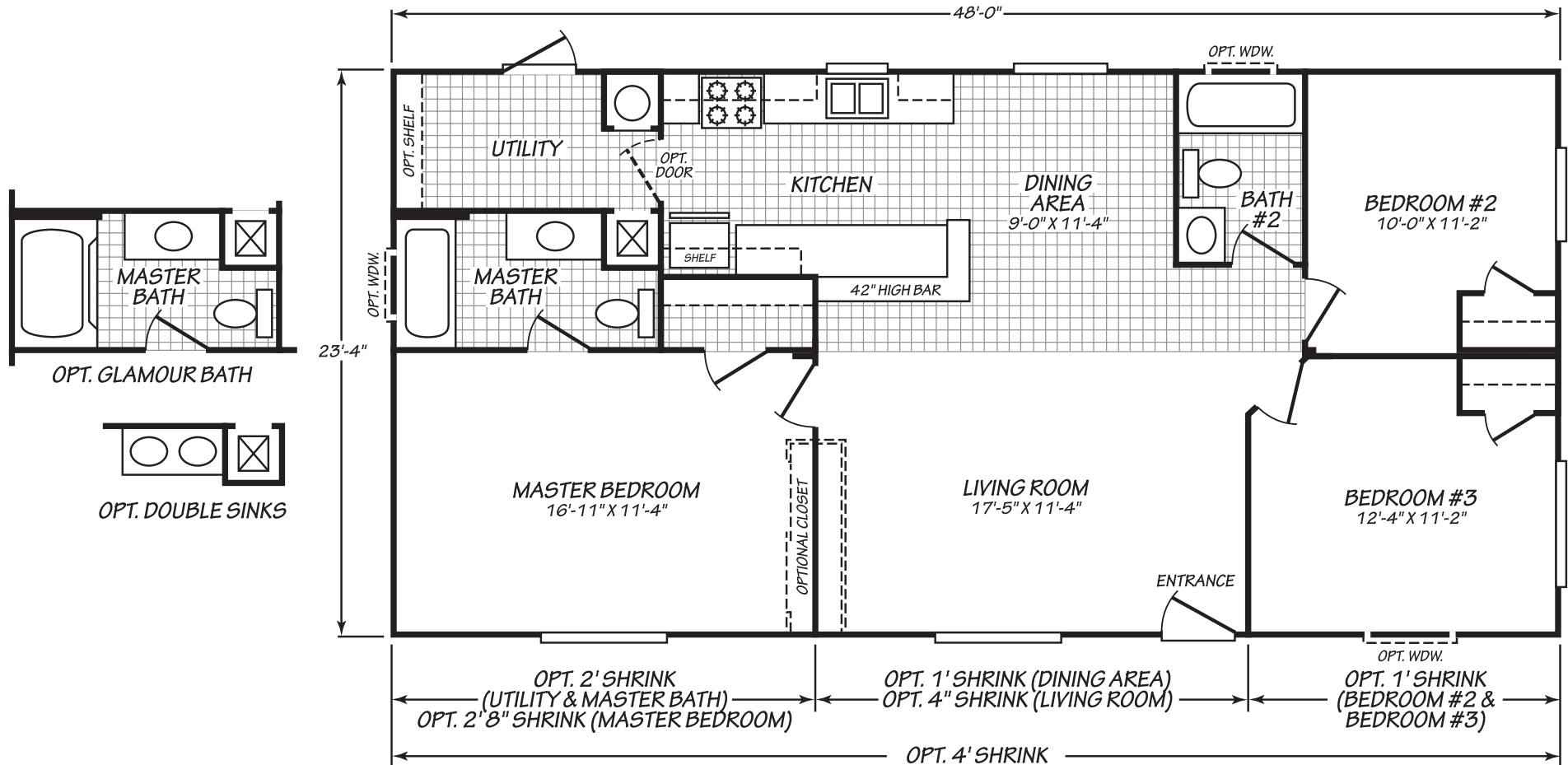
**24442M** 2 BEDS • 2 BATHS • 1,026 SQ. FT.



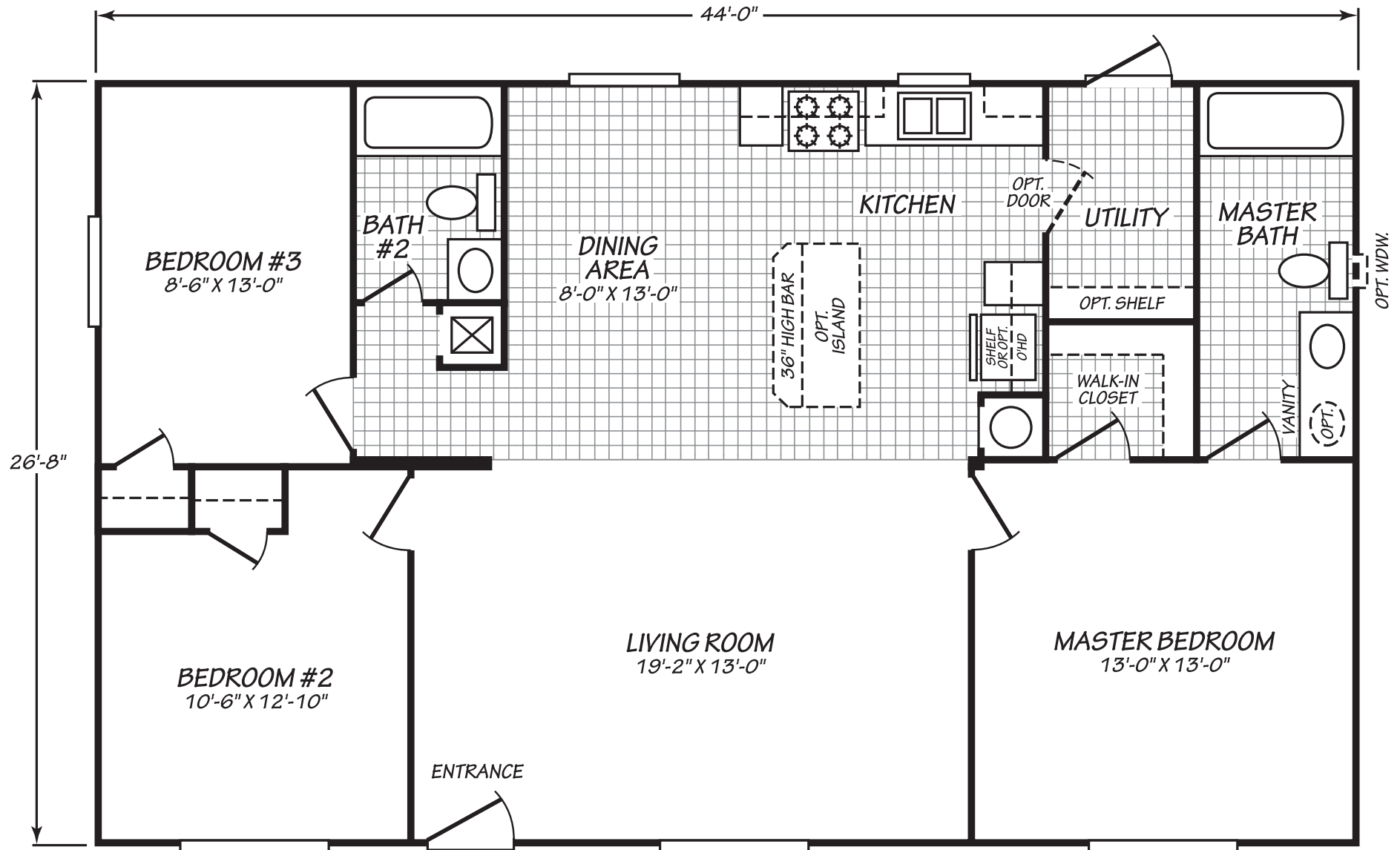
**24483M** 3 BEDS • 2 BATHS • 1,119 SQ. FT.



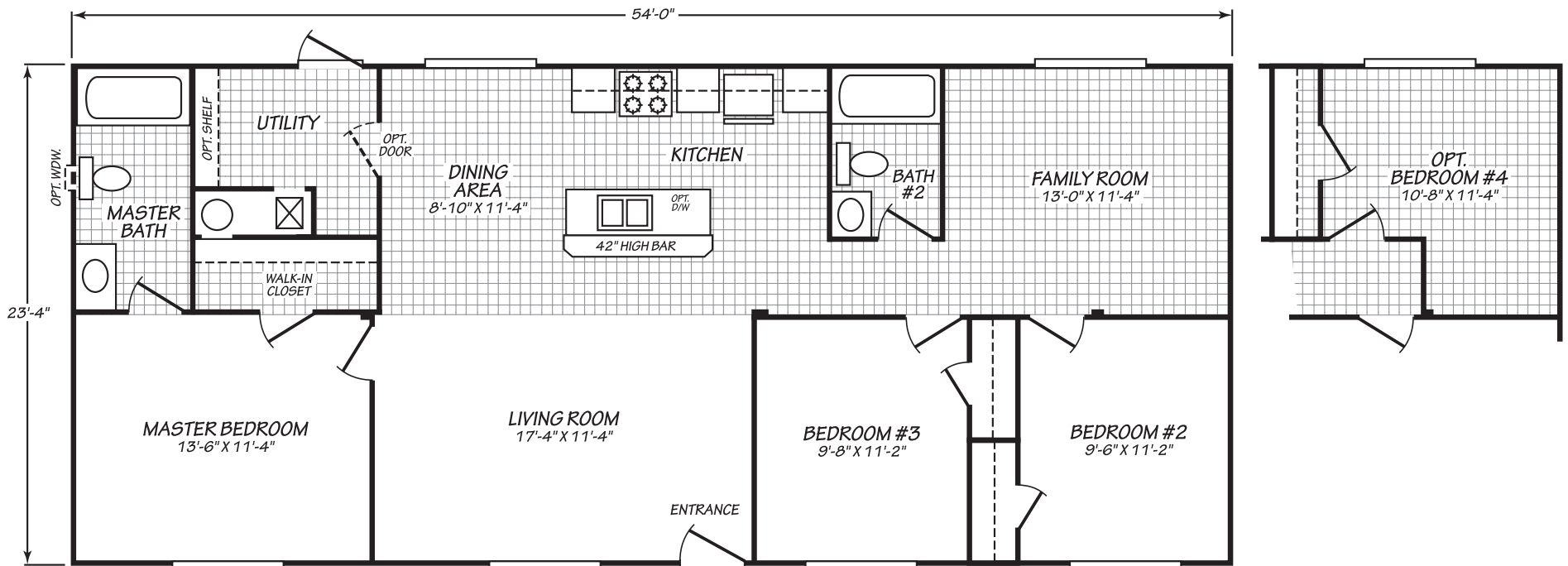
**24483B** 3 BEDS · 2 BATHS · 1,120 SQ. FT.



**28443B** 3 BEDS • 2 BATHS • 1,173 SQ. FT.

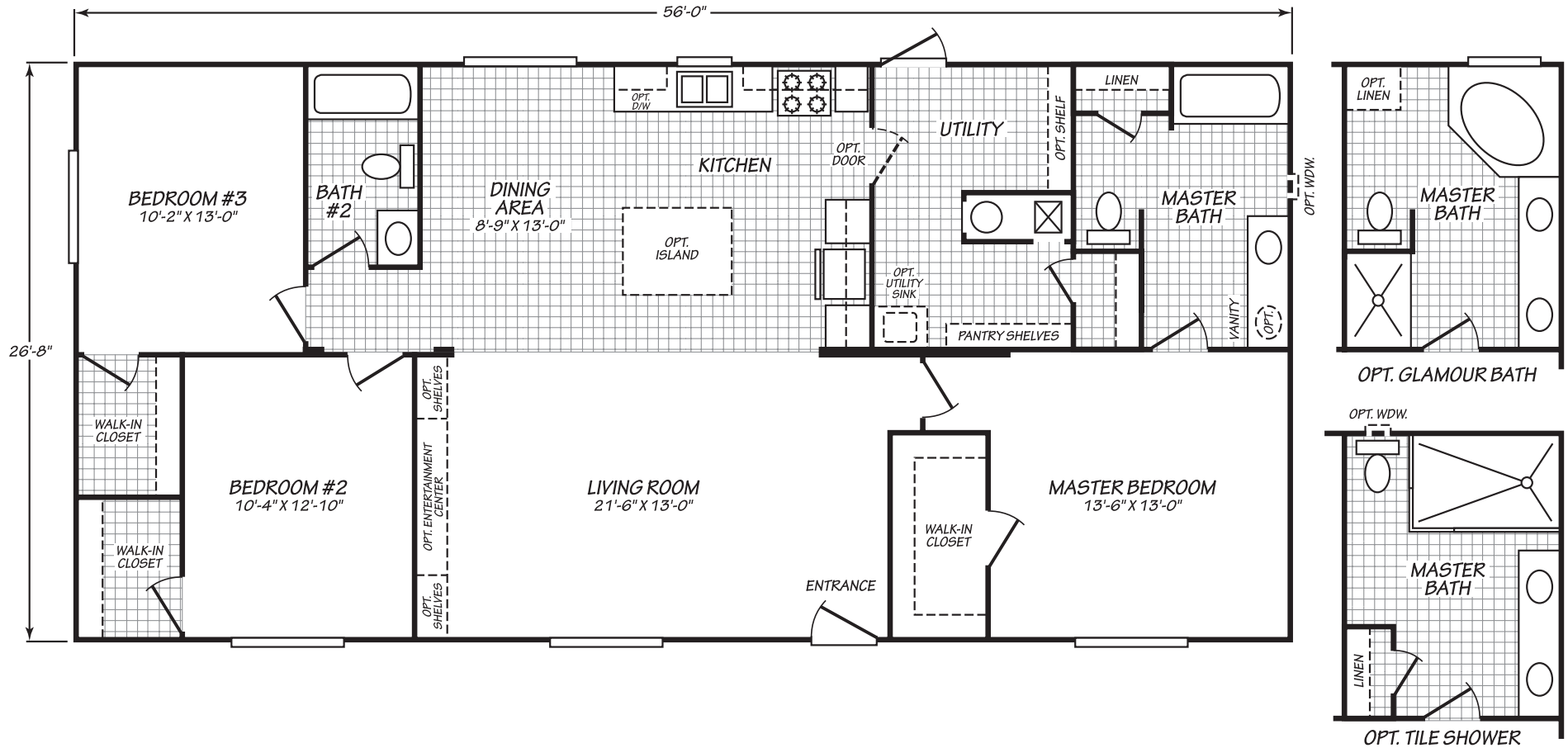


**24543B** 3 BEDS • 2 BATHS • 1,260 SQ. FT.

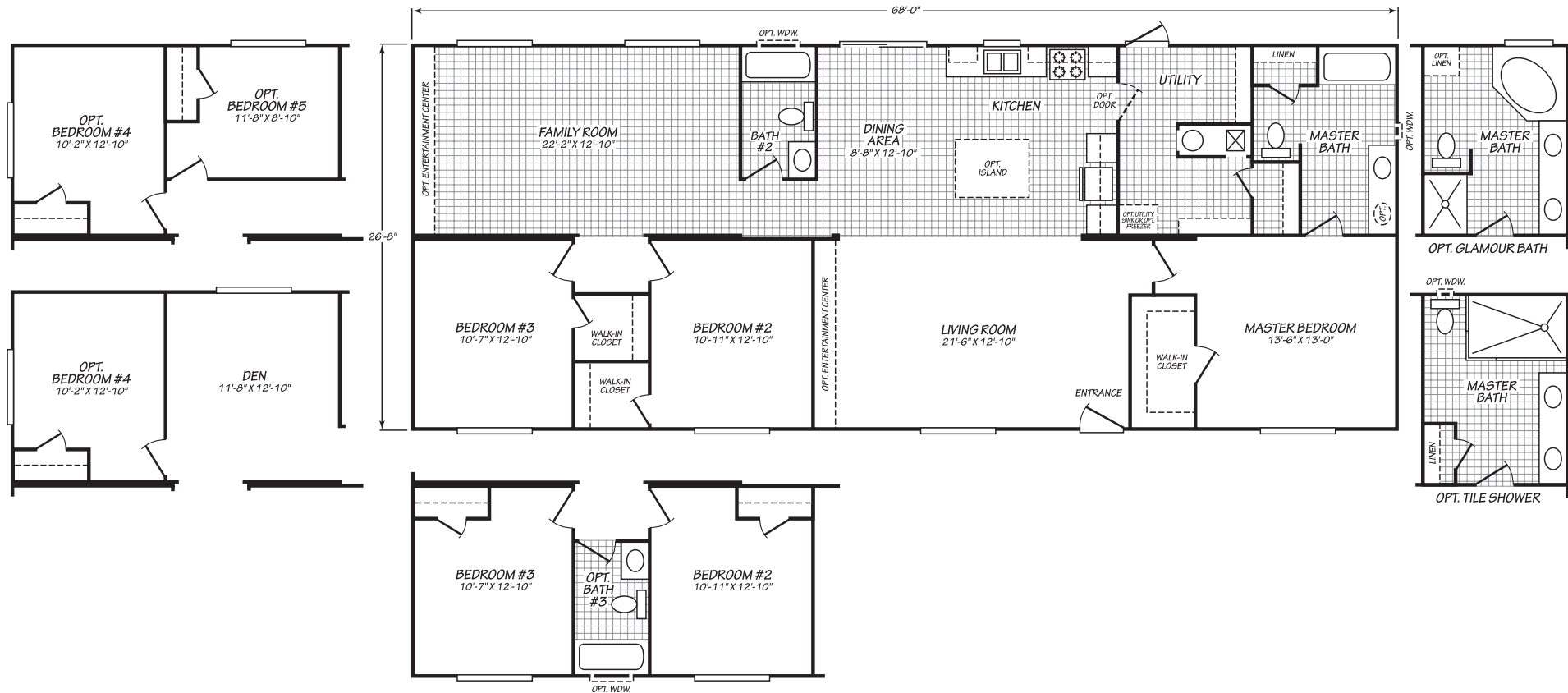




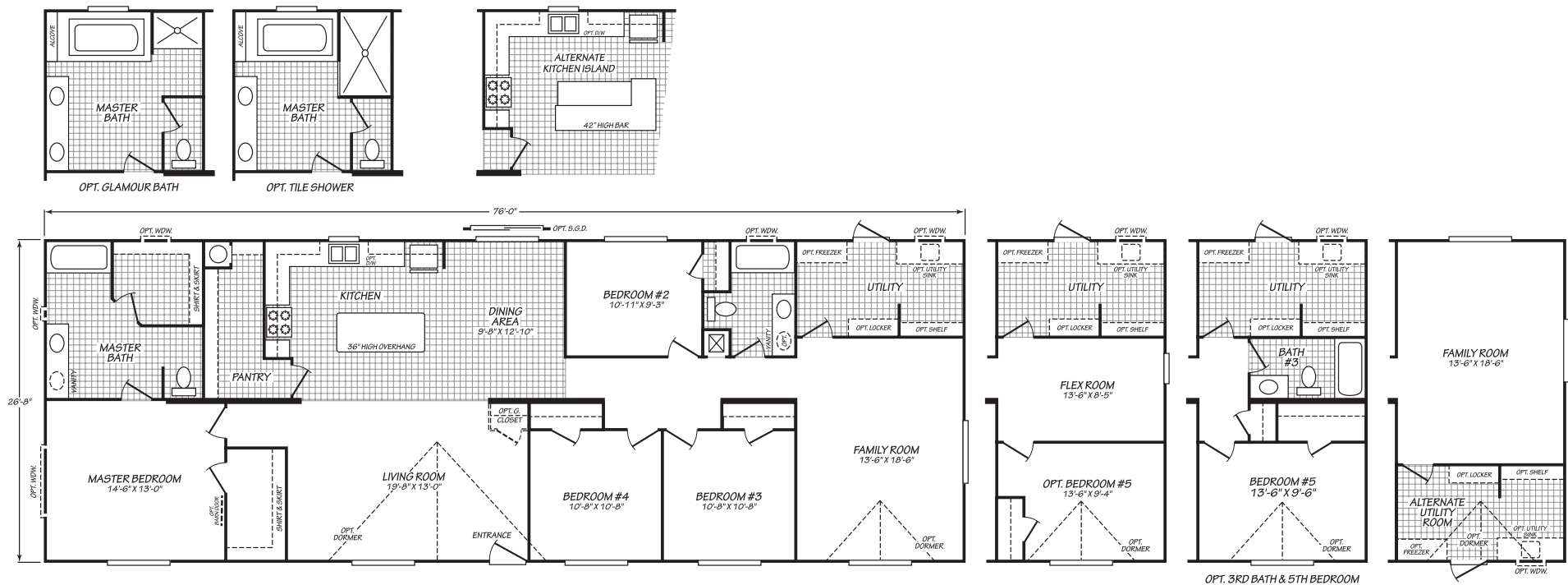
**28563B** 3 BEDS • 2 BATHS • 1,493 SQ. FT.



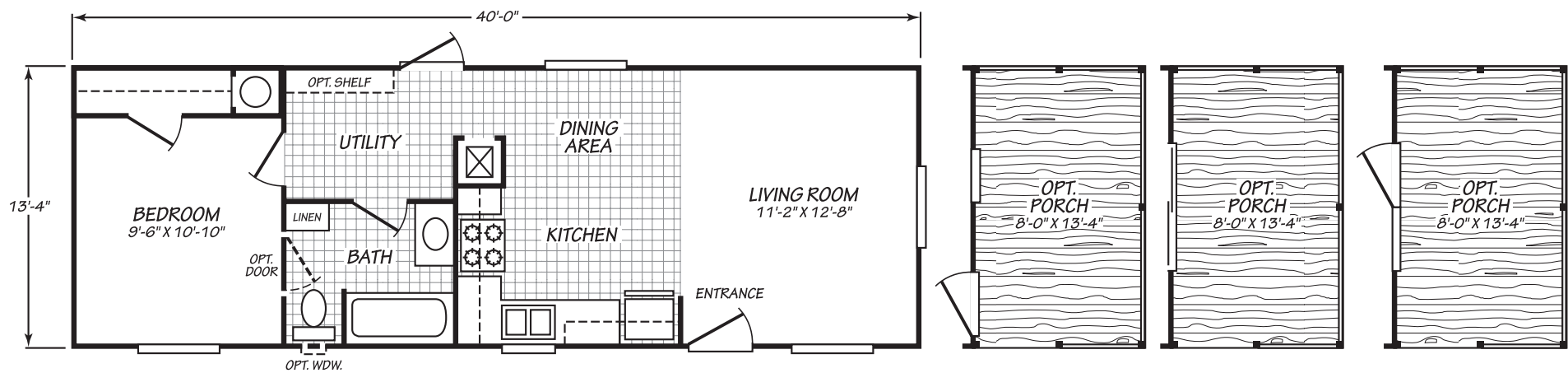
**28683B** 3 BEDS · 2 BATHS · 1,812 SQ. FT.



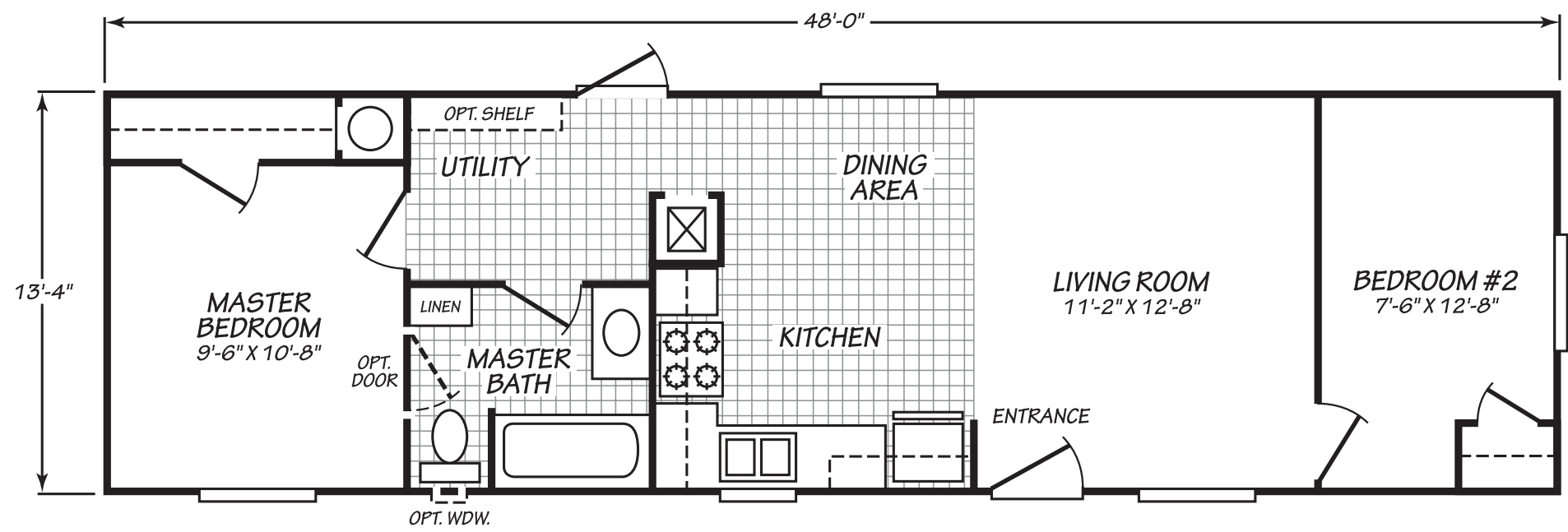
**28764T** 4 BEDS • 2 BATHS • 2,026 SQ. FT.



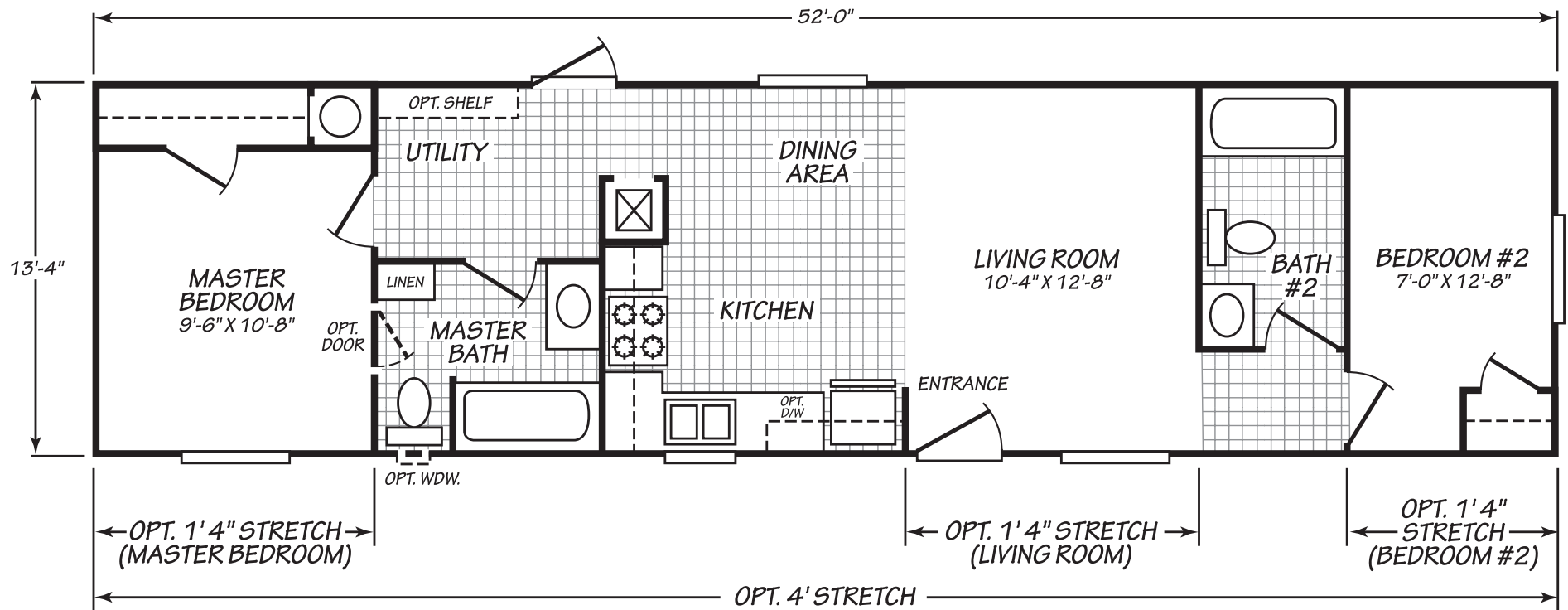
**14401B** 1 BEDS · 1 BATHS · 533 SQ. FT.



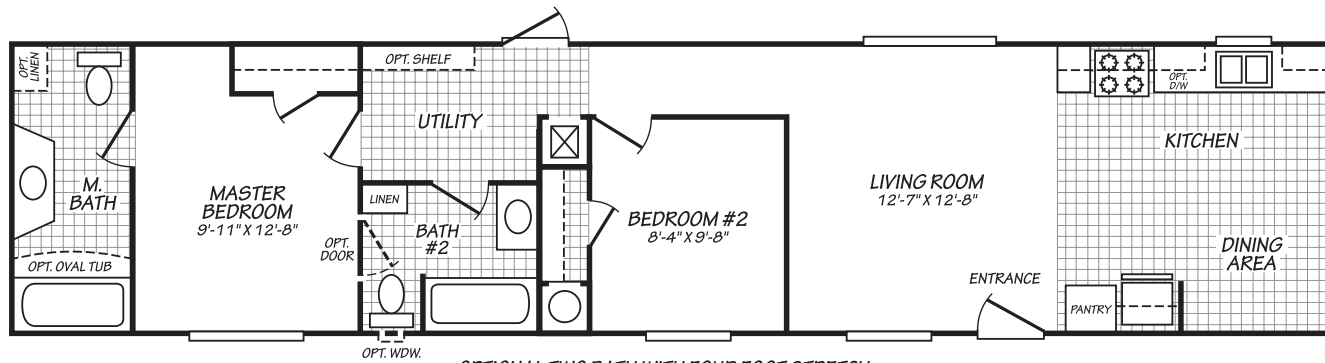
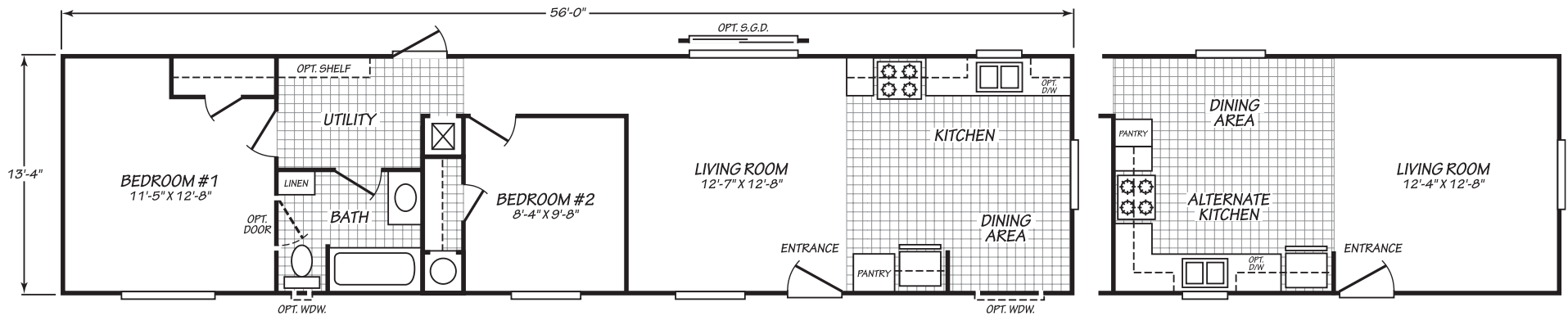
**14482B** 2 BEDS · 1 BATHS · 640 SQ. FT.



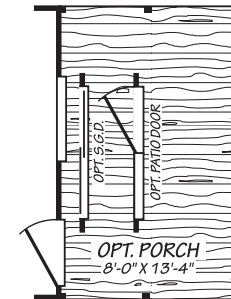
**14522B** 2 BEDS • 2 BATHS • 693 SQ. FT.



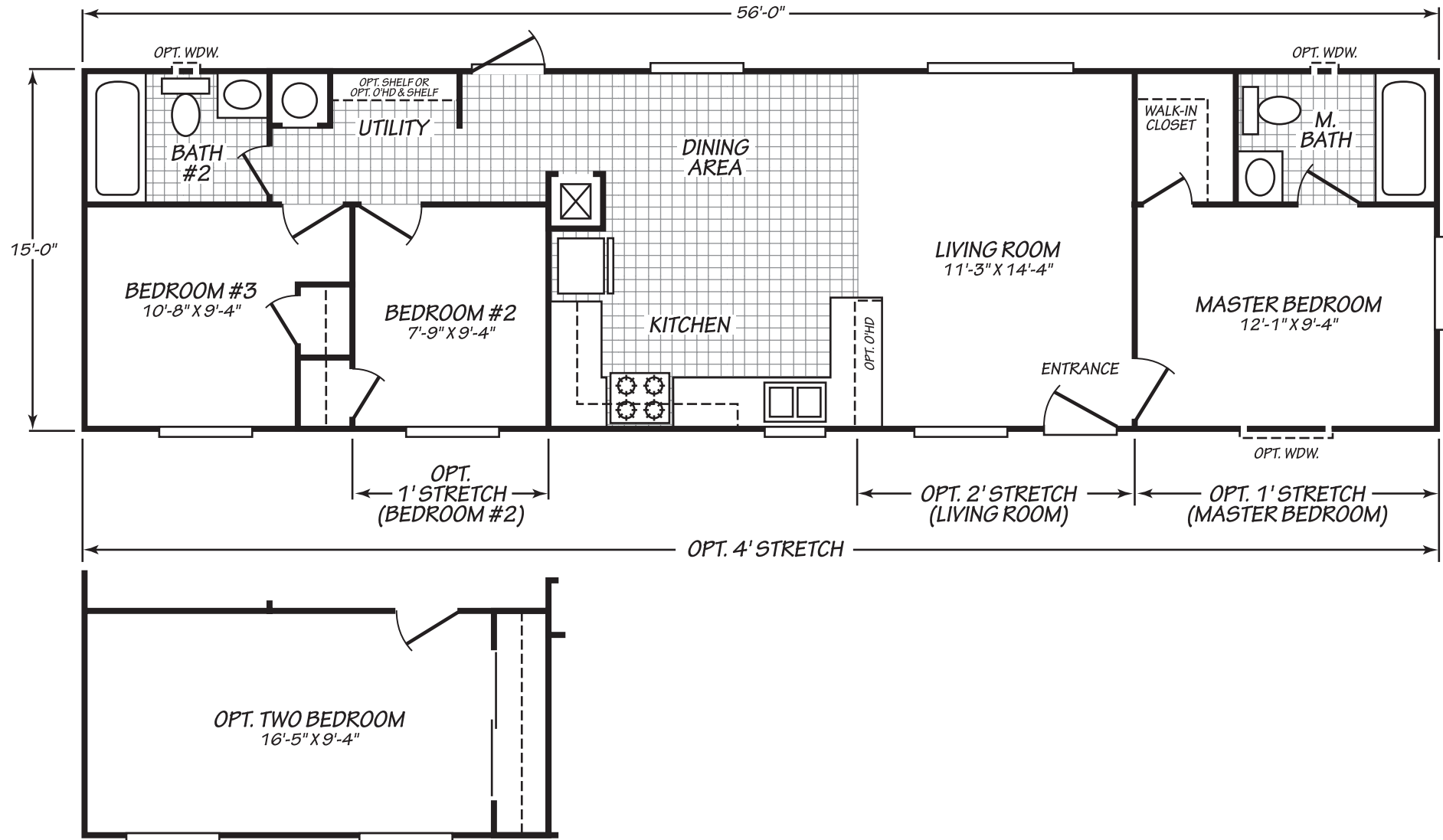
**14562B** 2 BEDS · 1 BATHS · 746 SQ. FT.



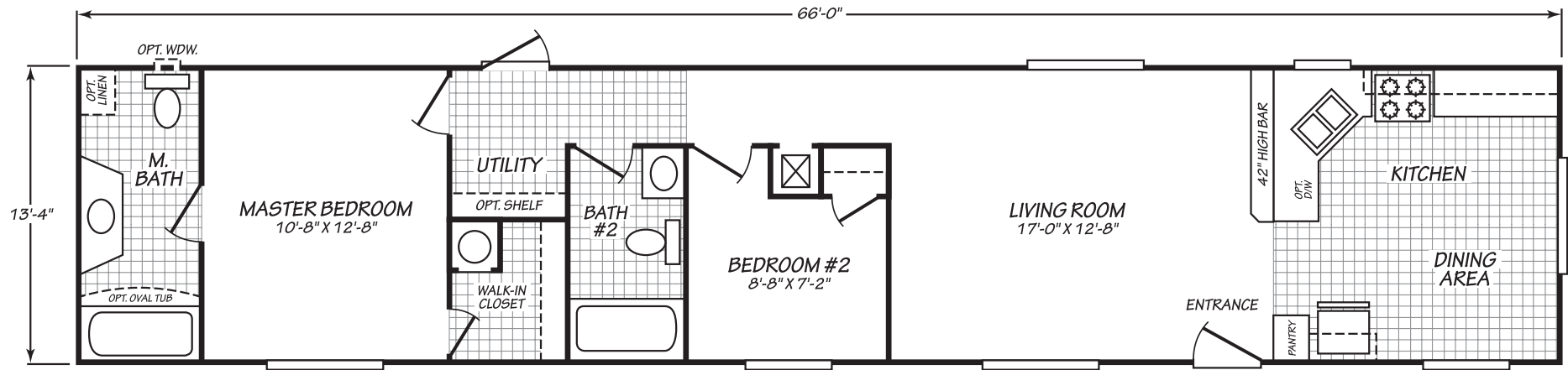
OPTIONAL TWO BATH WITH FOUR FOOT STRETCH



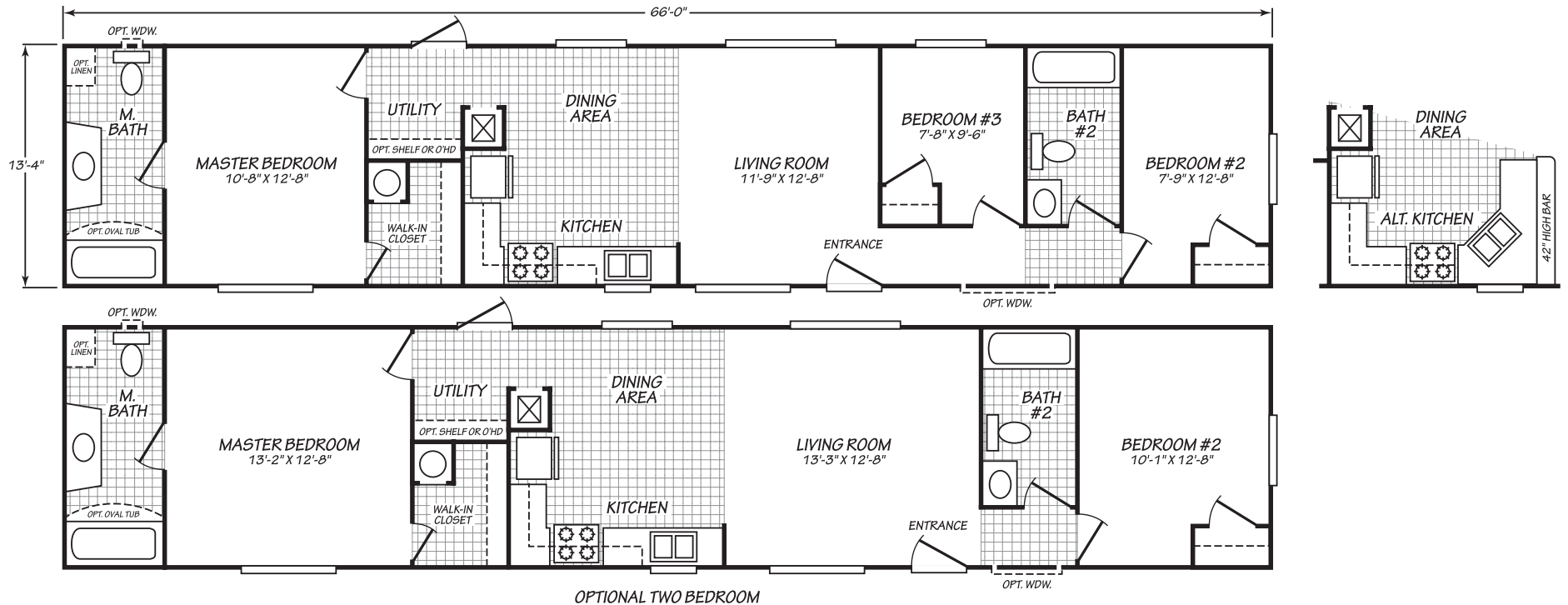
**16563B** 3 BEDS · 2 BATHS · 840 SQ. FT.



**14662B** 2 BEDS · 2 BATHS · 880 SQ. FT.

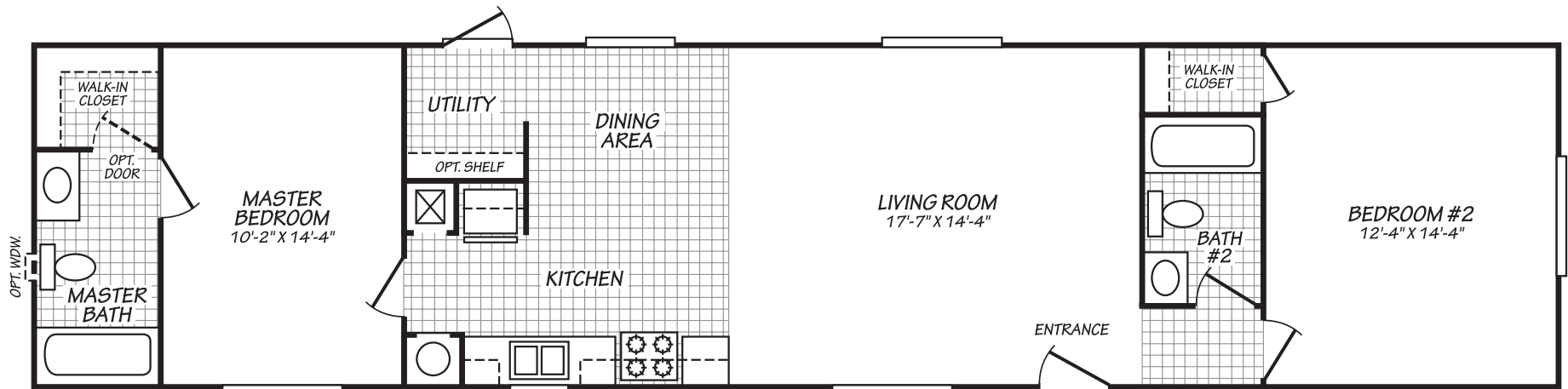
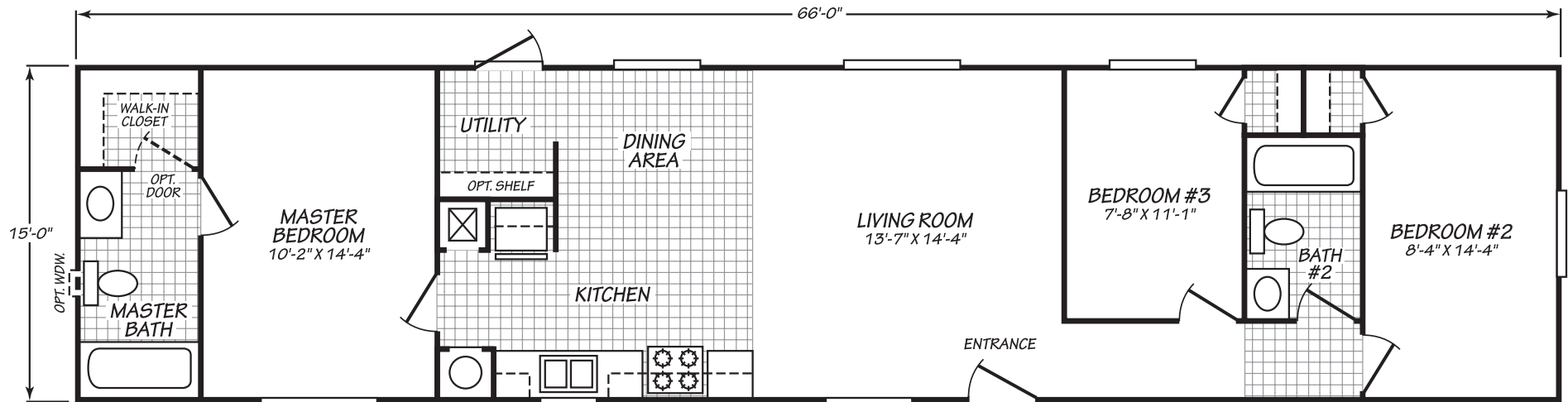


**14663B** 3 BEDS · 2 BATHS · 880 SQ. FT.





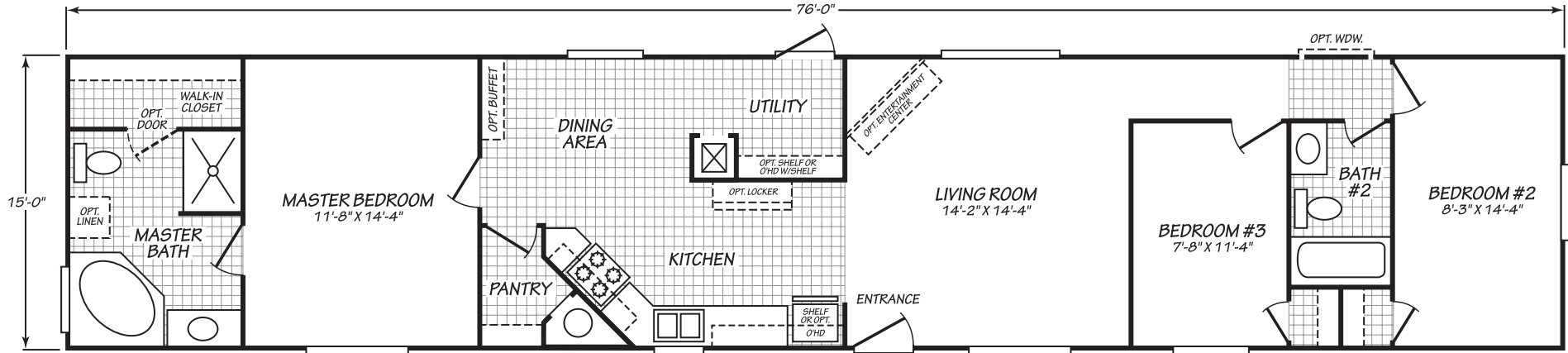
**16663B** 3 BEDS • 2 BATHS • 990 SQ. FT.



OPTIONAL TWO BEDROOM

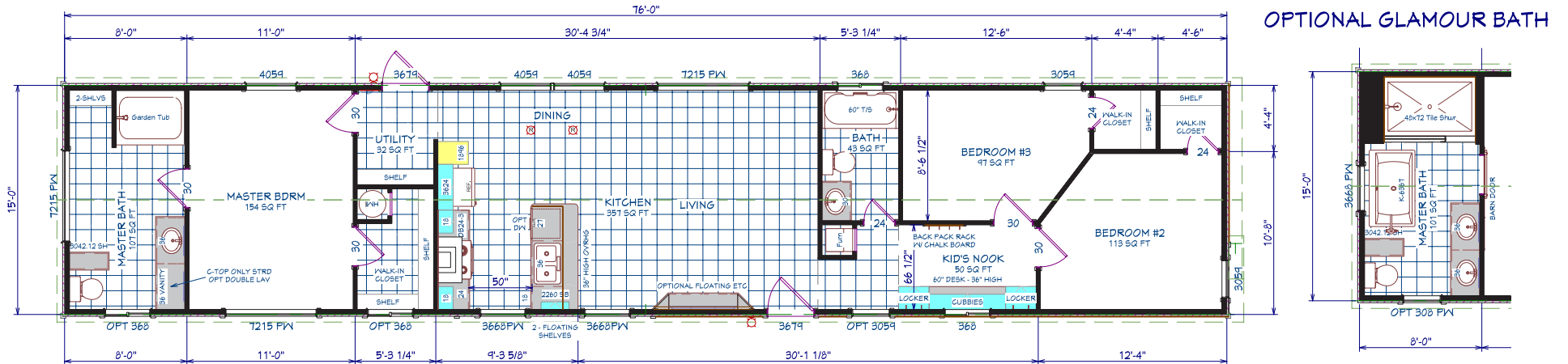
# 16763B

3 BEDS • 2 BATHS • 1,140 SQ. FT.

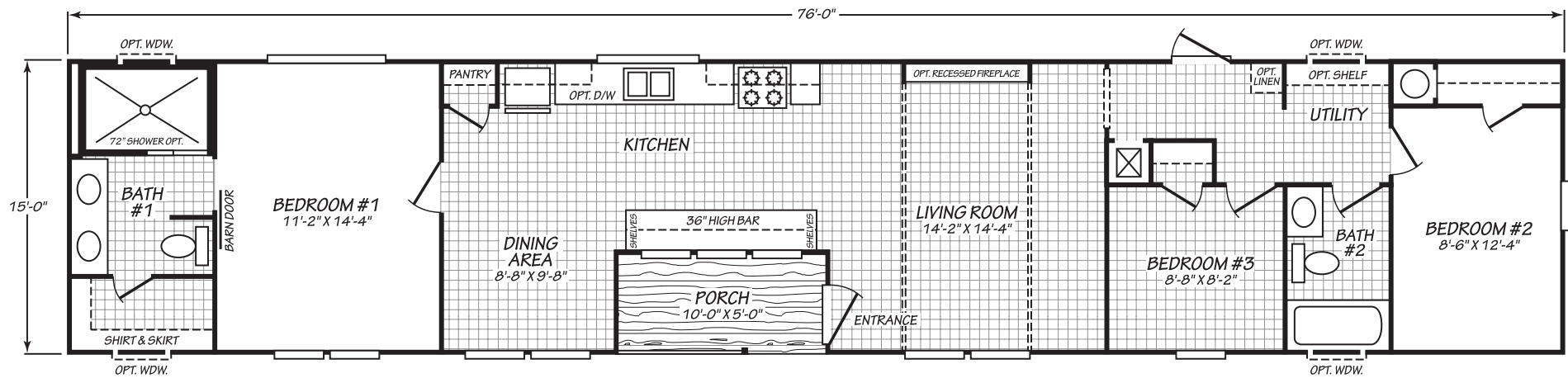


# 16763N

3 BEDS • 2 BATHS • 1,140 SQ. FT.



**16763T** 3 BEDS · 2 BATHS · 1,140 SQ. FT.



16763N



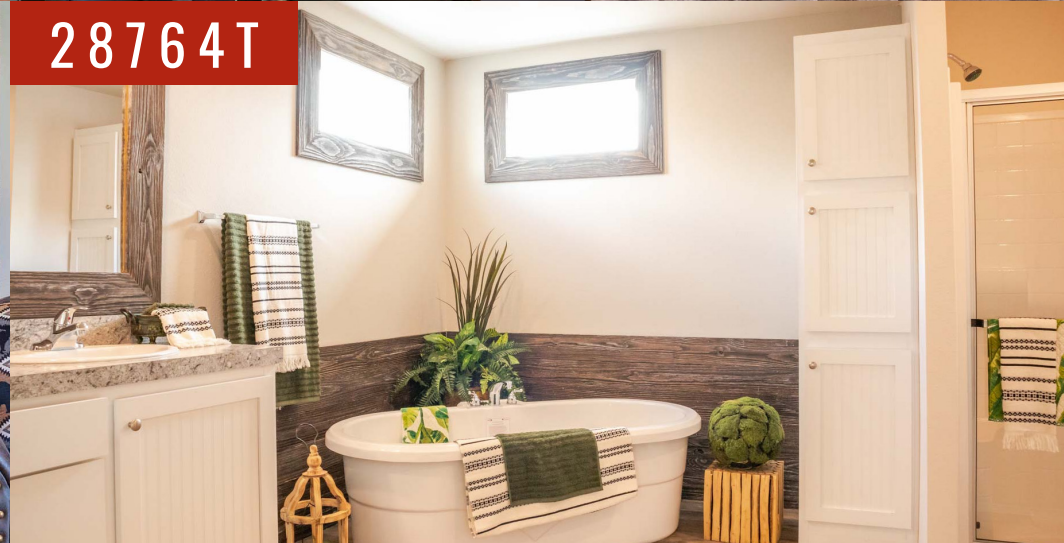
28683B



28683B



28764T



14663B



28683B



28764T



16763N



28683B



28764T



16763N



28683B



28764T



28683B



28764T



16763N



28683B



24543B



# NOTES

YOUR LOCAL DEALER:



**FLEETWOOD HOMES OF NAMPA, ID**

2611 E Comstock Ave, Nampa, ID 83687  
(208) 466-2438  
[www.fleetwoodhomesnampa.com](http://www.fleetwoodhomesnampa.com)