



NAMPA, ID



WAVERLY CREST PRESTIGE  
2019 SERIES BROCHURE

*Built For Life*

# STANDARD FEATURES

## EXTERIOR

LP Smart Panel exterior siding  
Window lintel trim above FDS windows & door  
4" trim on remaining windows  
10' dormer w/fascia mounted starburst  
6" eaves around home on 28' wide  
10" eaves around home on 30' wide  
No sidewall eaves singlewides  
6" front & rear endwall overhang singlewides  
Black roof vents  
Wainscot accent paint on FDS

## INTERIOR/FINISH WALLS

15 oz. Carpet & 7/16" - 6# Carpet pad  
Factory installed carpet and carpet pad  
Vinyl flooring in wet areas & per plan  
Tape & texture walls T/O w/rounded corners  
2 1/4 baseboards T/O  
Closets & Pantries painted drywall & molding  
Ceiling matched paint to main interior paint choice  
Faux beam coffered ceiling accent painted w/  
chandelier in dining room  
Wire closet & pantry shelves  
White window trim & window sills - no T & T  
Entry lino

## KITCHEN

18 cu. ft. Black Whirlpool frost-free refrigerator  
30" Black Whirlpool free standing electric  
range, w/clock, window & timer  
7" Double cell stainless steel sink  
Dual handle chrome faucet  
Bank of drawers w/1 small drawer & 2 large  
drawers  
Laminate backsplash

## CABINETRY

Hardwood cabinet doors and face frames  
Cab doors & drawers w/upgraded brushed nickel pulls  
42" overhead kitchen cabinets w/full cabinet doors  
Crown molding is standard on kitchen cabinets  
Decorative Range hood canopy w/fan above range  
Shelf above washer/dryer is optional  
Double shelves or Transom w/shelf above  
refrigerator (per plan)  
Overhead cabinets w/2 adjustable shelves  
Metal side mount drawer guides  
Wood ply drawer sides  
Premium built-in cabinet features per plan

## MASTER BATH

60" 3 pc. ABS tub/shower  
Acrylic sink w/dual handle faucets  
Single lever tub/shower diverter  
Exhaust fan  
Framed bathroom mirrors  
36" height lavy cabinet  
LED can light above sink  
Towel bar & tissue holder  
Laminate backsplash

## GUEST BATH

60" 3 pc. ABS tub/shower  
Plastic sink w/ dual handle faucets  
Single lever tub/shower diverter  
Exhaust fan  
Framed bathroom mirror  
24" x 42" Mirror  
36" height lavy cabinet  
Towel bar and tissue holder  
Laminate backsplash

## DOORS & WINDOWS

36" Steel in-swing front door w/deadbolt  
36" Steel in-swing rear door w/deadbolt  
Vinyl clad thermo-pane windows with Low "E"  
Mini blinds are optional  
2-Panel white interior doors  
Residential style mortise door hinges (3)  
2 1/4" door trim w/1" flat back of closet doors  
Floor mount door stops  
12" wood valances L/R, F/R, D/R, All Beds, KIT

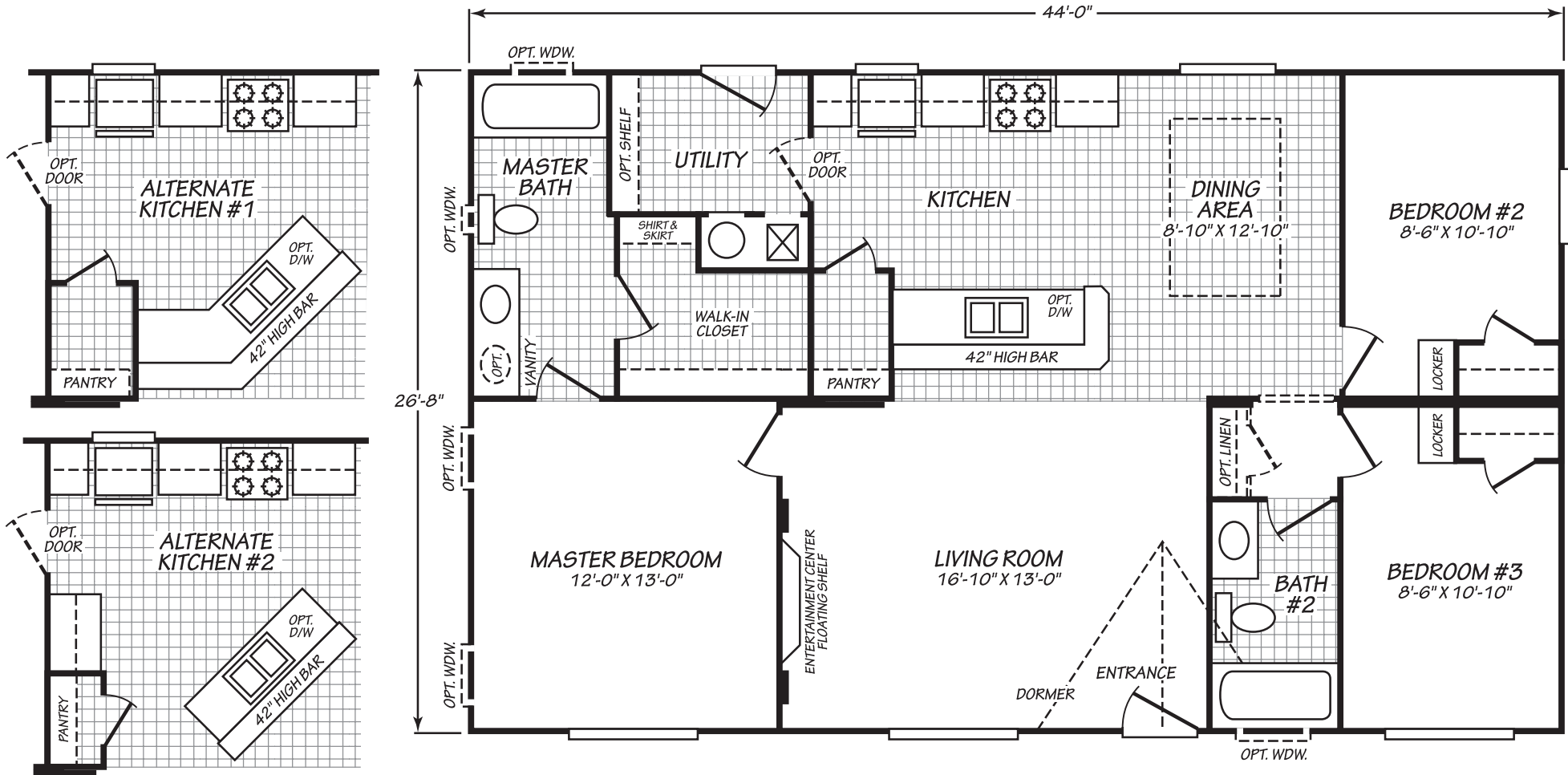
## ELECTRICAL & PLUMBING

200 Amp all electric service (gas optional)  
Master water shut-off valve  
Shut-off valve on toilets  
30 gallon electric water heater  
Electric furnace  
Bedroom ceiling lights  
LED can lights standard T/O  
GFI patio plug near rear door  
Black upgrade porch light front door  
White porch light back door  
Wire & brace for ceiling fan living room/family room

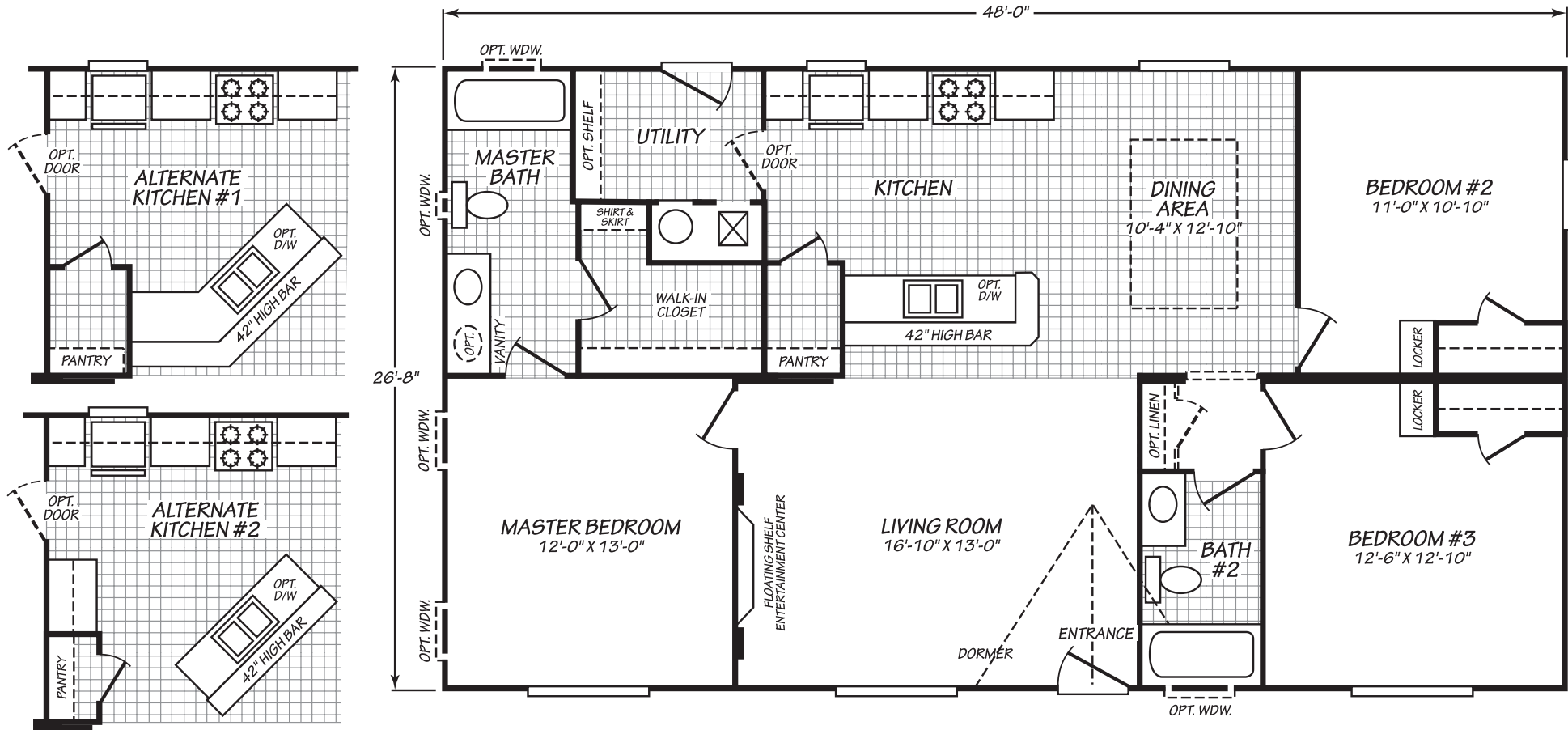
## STRUCTURAL

1 Year structural warranty (see warranty manual for  
complete details)  
30 lb. Roof load  
8'-6" flat ceilings  
2" x 6" Exterior walls 16" o.c.  
19/32" T&G OSB floor decking  
2" x 6" - 19.2" O.C. floor joist (2" x 8" on 30' wide)  
2" x 8" - 19.2" O.C. floor joist (16' wide only)  
3:12 Roof pitch  
Class A fire rated limited lifetime architectural shingles  
Removable hitches  
Zone III Thermal Specifications: R-21 roof, R-21 walls,  
R-11 floor

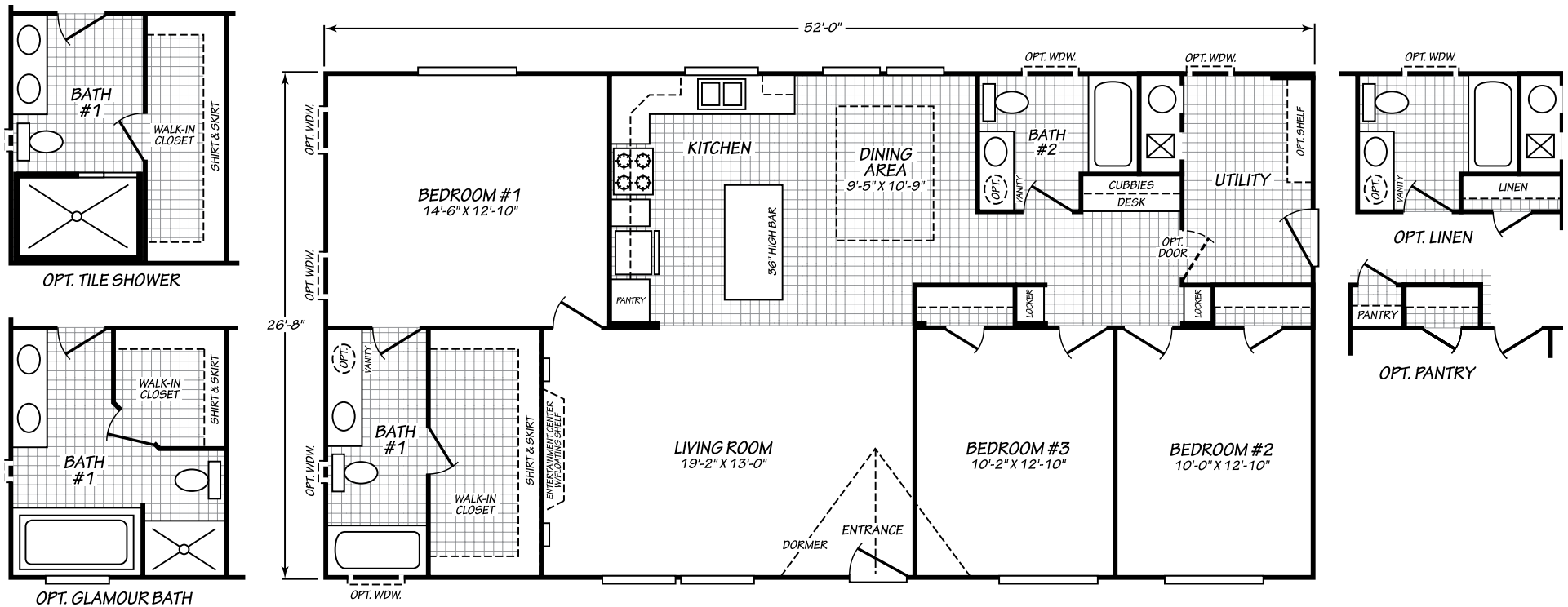
**28443E** 3 BEDS • 2 BATHS • 1,173 SQ. FT.



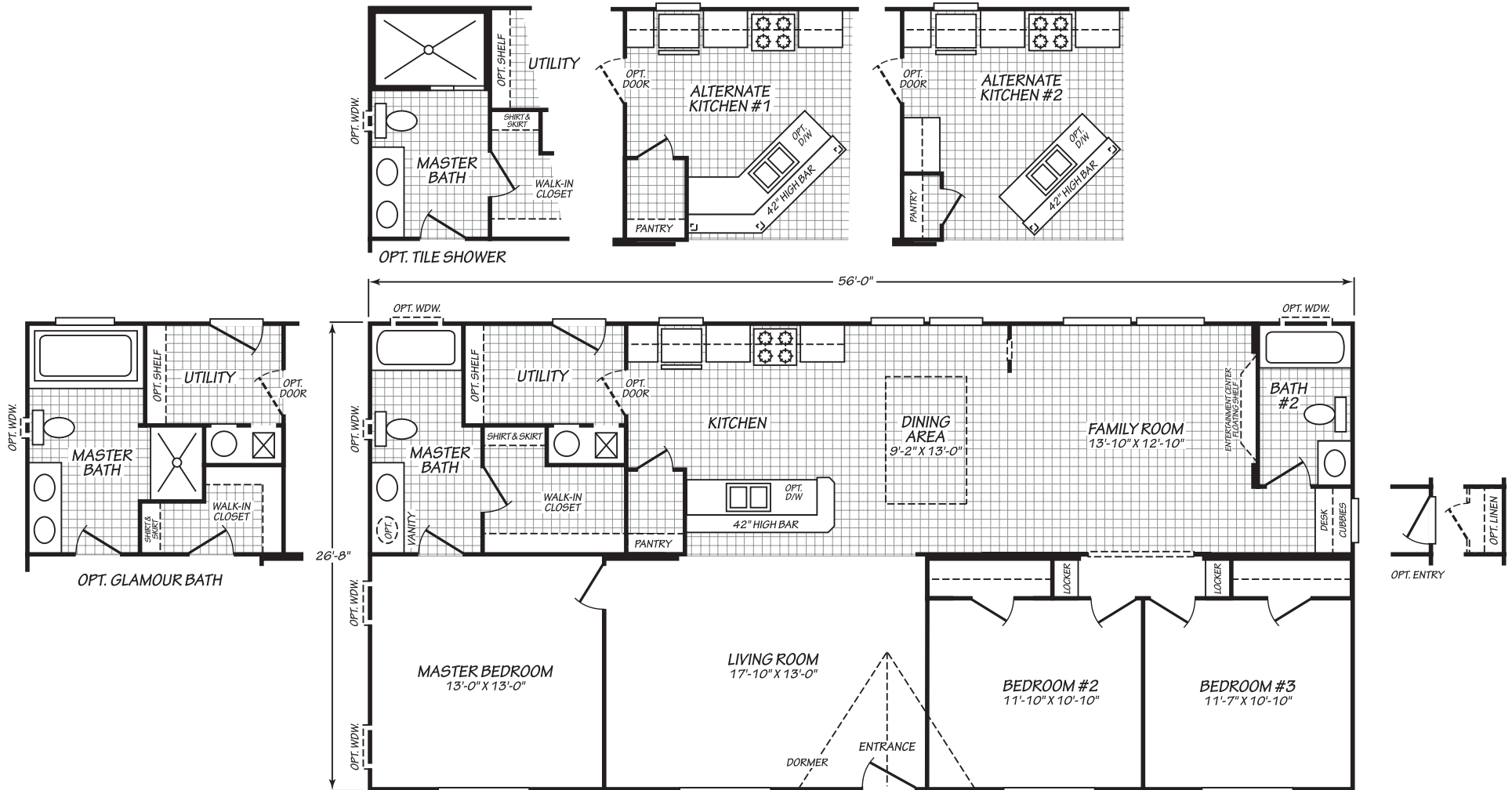
**28483E** 3 BEDS · 2 BATHS · 1,279 SQ. FT.



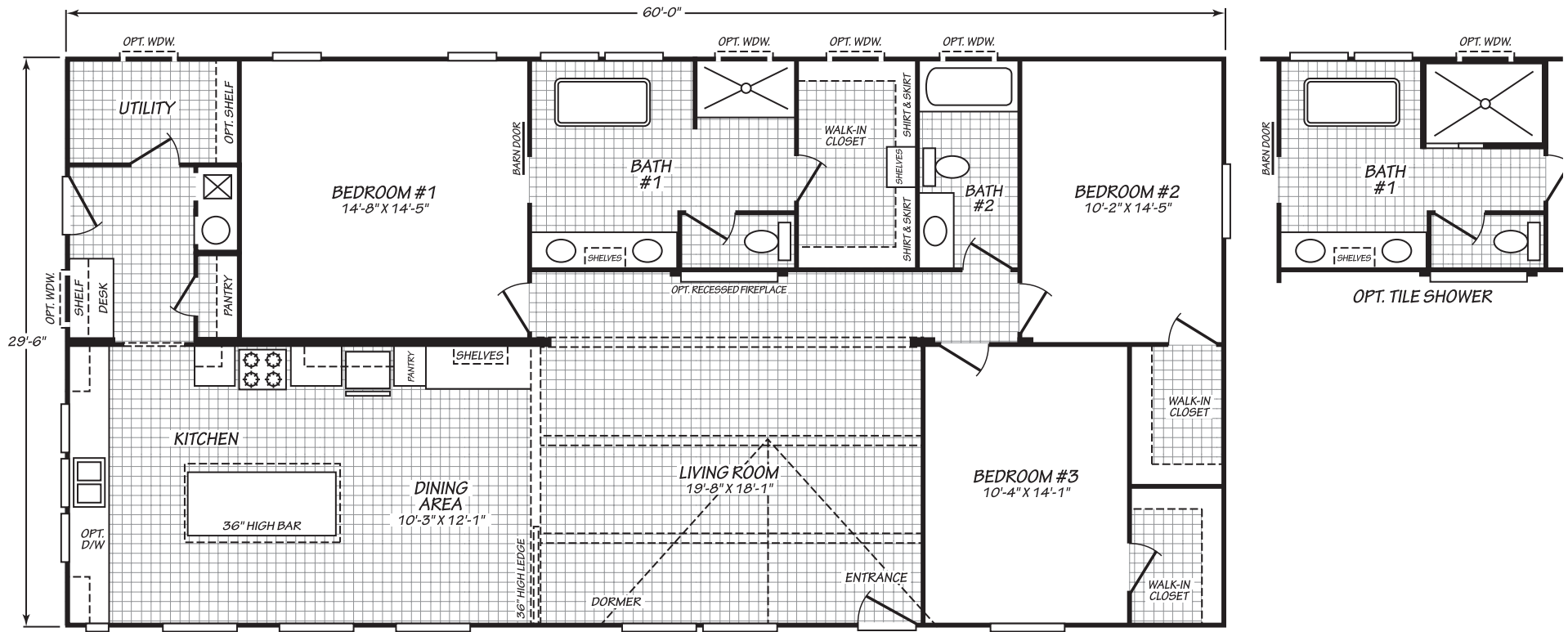
**28523L** 3 BEDS • 2 BATHS • 1,386 SQ. FT.



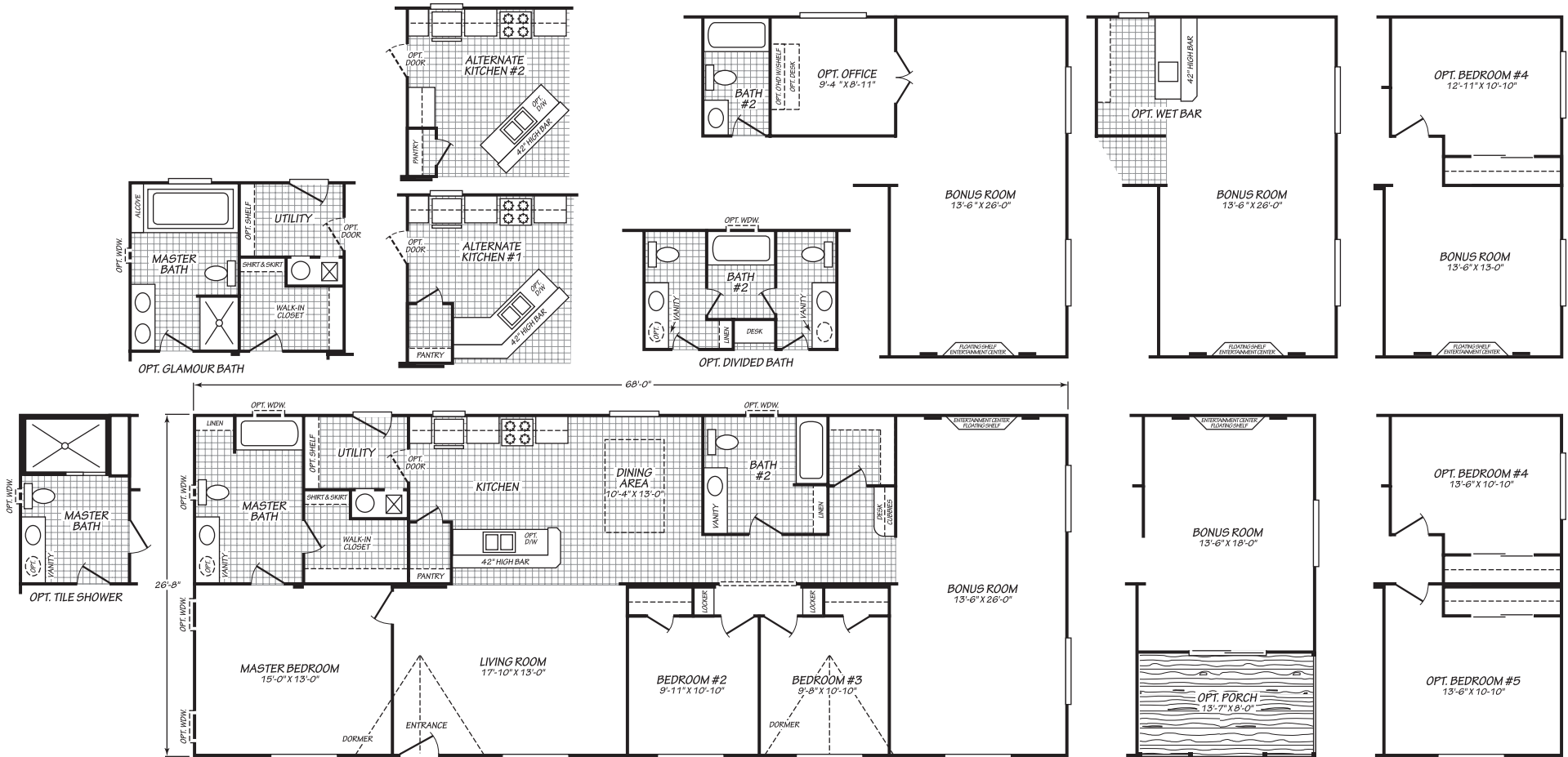
**28563E** 3 BEDS · 2 BATHS · 1,492 SQ. FT.



**30603F** 3 BEDS · 2 BATHS · 1,770 SQ. FT.

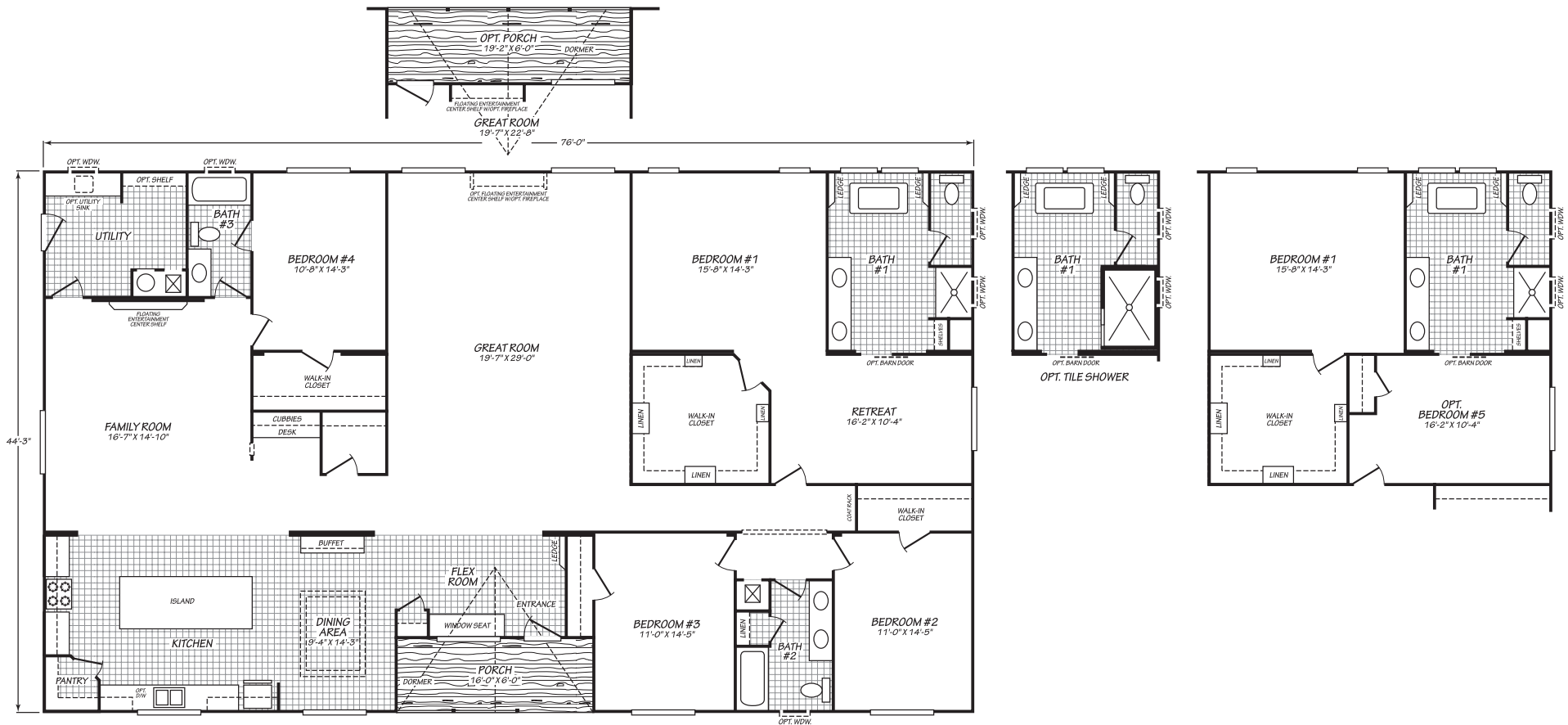


**28683E** 3 BEDS · 2 BATHS · 1,812 SQ. FT.





**45764S** 4 BEDS • 3 BATHS • 3,267 SQ. FT.





NOTES

YOUR LOCAL DEALER:



**Fleetwood**  
**HOMES**®

**FLEETWOOD HOMES OF NAMPA, ID**

2611 E Comstock Ave, Nampa, ID 83687

(208) 466-2438

[www.fleetwoodhomesnampa.com](http://www.fleetwoodhomesnampa.com)